

first for homes

first for property in life - firstforhomes.co.uk

Contact Allan England's Team
01592 752 944



Dunbeath Drive, Glenrothes
Offers over £116,995

Dunbeath Drive, Glenrothes

Another Opportunity To View! Lovely Bright & Spacious 3-Bedroom Mid-Terraced Family Home, Situated Within the Popular Area of Pitteuchar, Glenrothes!

Allan England's award winning team at first for homes are proud to welcome to the market this lovely bright and spacious 3-Bed Mid-Terraced Villa, situated within the popular area of Pitteuchar, Glenrothes. The property forms and ideal first-time purchase or buy to let investment and comprises of: entrance hallway, open plan lounge/diner, modern kitchen with integrated oven and gas hob and rear porch. Stairs to upper level provide a master bedroom with triple built in wardrobes and 2 further generous bedrooms with built in cupboards and family bathroom. Ample storage throughout. Externally there are West facing low maintenance garden grounds to the rear and ample street parking. Early viewing is highly recommended to ensure you don't miss out!

Home Report Value - £120,000

EPC Rating- D

Council Tax- B

Call first for homes - first for trust... first for service... first for aftercare.

Glenrothes is regarded as one of the most successful Towns in Scotland with a wealth of local amenities including Kingdom Shopping Centre as well as sport and leisure at Michael Woods and a multi-screen cinema. Glenrothes boasts its very own 18-hole Golf course and both Primary and Secondary schooling are available. For the commuter the A92 allows swift access to Edinburgh and there are railway stations at both Thornton and Markinch.





SITUATION – Glenrothes

ENTRANCE HALLWAY

OPEN PLAN LOUNGE/DINER

21'7" x 12'7" (approx) (6.60m x 3.84m (approx))

KITCHEN

12'8" x 7'2" (approx) (3.88m x 2.20m (approx))

REAR PORCH

STAIRS TO UPPER LEVEL

BEDROOM 1

12'7" x 8'11" (approx) (3.84m x 2.72m (approx))

BEDROOM 2

9'10" x 7'3" (approx) (3.00m x 2.21m (approx))

BEDROOM 3

6'4" x 5'5" (approx) (1.94m x 1.66m (approx))

REAR GARDEN

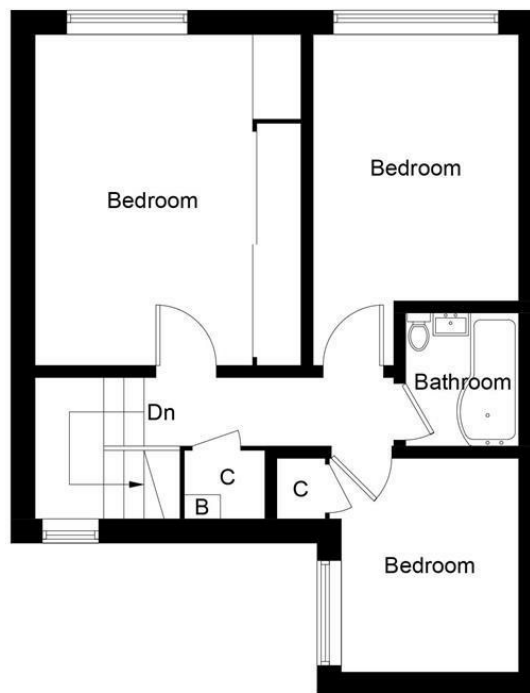
STREET PARKING

INFORMATION





Ground Floor



First Floor

Illustration for identification purposes only, measurements are approximate, not to scale. Fourlabs.co © (ID1253202)

Information

These particulars are prepared on the basis of information provided by our clients. We have not tested the electrical system or any electrical appliances, nor where applicable, any central heating system. All sizes are recorded by electronic tape measurement to give an indicative, approximate size only. Prospective purchasers should make their own enquiries – no warranty is given or implied. This schedule is not intended to, and does not form any contract.

FREE Valuation

Selling Your Home?

Choose first for homes - a highly experienced estate agency team you can trust to sell your home at the highest possible price. Offering fantastic savings on selling fees, with no compromise on service, free professional photography highlighting your home in its best light, first for homes will be your first choice. Contact us today to arrange your appointment.



first for trust



first for service



first for aftercare

first for homes
first for property in life - firstforhomes.co.uk

Contact Allan England's Team
01592 752 944

32 North Street, Glenrothes, Fife KY7 5NA
Fax: 01592 807947
sales@firstforhomes.co.uk
www.firstforhomes.co.uk